

Table of Contents

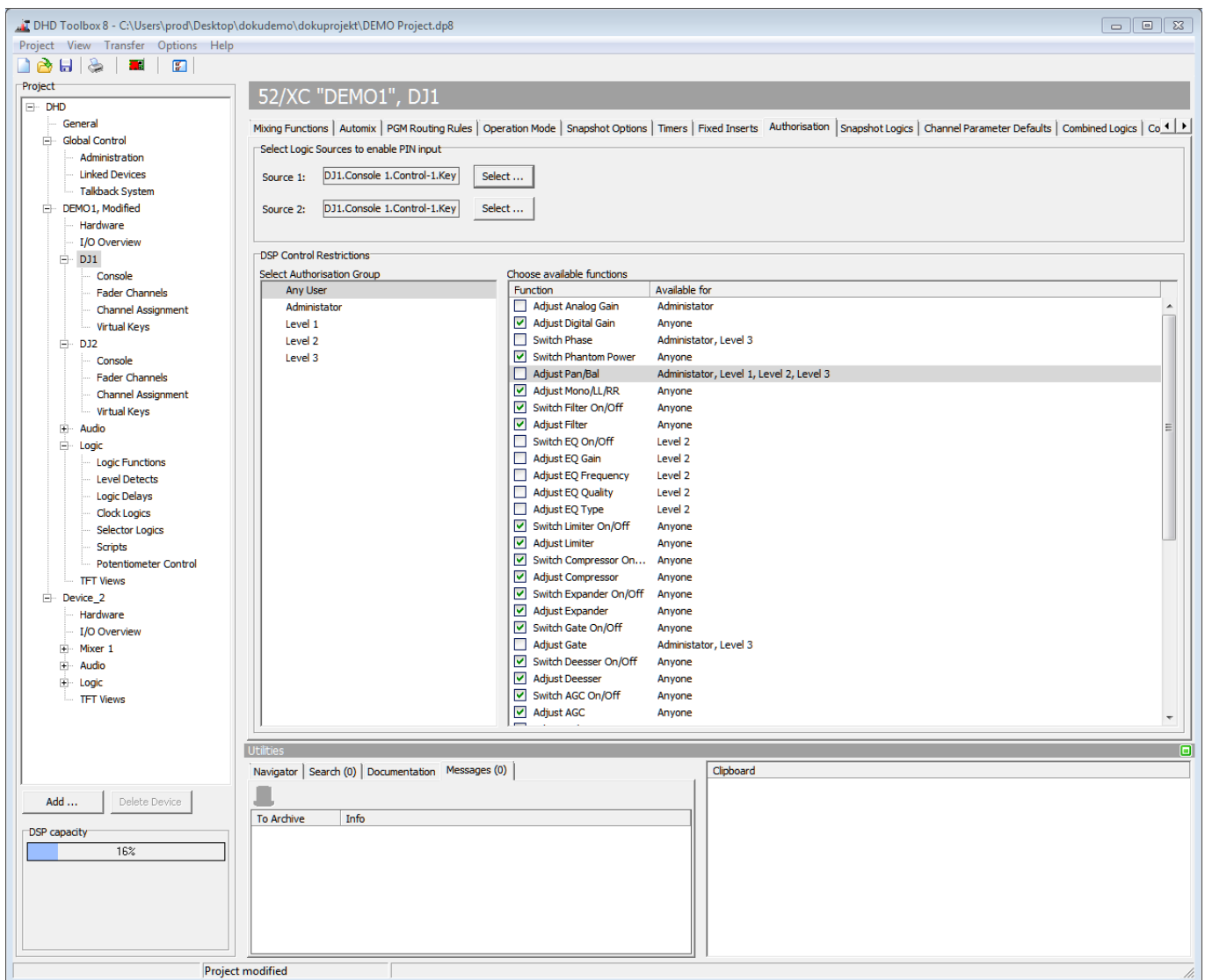
Authorisation	1
<i>Select Logic Sources to enable PIN input area</i>	1
<i>DSP Control Restrictions area</i>	2

Authorisation

Select the **Authorisation** tab to configure the PIN input conditions and access restriction for DSP controls.

Select Logic Sources to enable PIN input area

The PIN input procedure is activated by the two logic sources **Source 1** and **Source 2**. They have to be activated at the same time for approximately 3 seconds. In most cases, use keys on the control modules as logic sources. But also other logic sources like GPIs or TFT Buttons are possible.



Authorisation: setting up logic sources for PIN input.



Tip

Alternatively, you can create a TFT Button with the Key Function **Show Keyboard**. On the **Element Configuration**, in the **Function list**, select **Login with keyboard**. When tap



the button, a login screen will be shown, there you can enter the PIN. See [TFT Button](#) and [Key Functions - TFT functions](#) for more information.

To select a logic source, click **Select** of the **Source 1** box or **Source 2** box. The **Logic Sources** window opens. Select the desired logic source. Click **Assign** to assign the source, alternatively, you can also double-click on the logic source or use drag & drop. Please see the [User Accounts](#) section for information on entering PIN codes.



Tip

You can also select the same button for **Source 1** and **Source 2**, so only pressing one button is necessary.

To log out, follow these steps:

1. Activate the assigned logic sources (i.e., press the **OK** key and the **Cancel** key in the control section) at the same time for approx. 3 seconds until you are prompted to enter a PIN number.
2. Activate logic source 2 until you see the **LOCKED** message.

DSP Control Restrictions area

Every User Group may have individual permissions. You can allow a group to use specific functions and with that you can disable specific functions for specific user groups too.

Select the Authorisation Group you want to edit in **Select Authorisation Group** list. Then you can select with the check boxes, which functions are permitted (selected) or forbidden (deactivated).



Important

If a function is allowed for Group **Any User**, all settings on specific groups are reset.

If a function is assigned to a user, the function is disabled for **Any User** and all other not assigned users.

Page Title: Authorisation

Permanent link:

<https://support.dhd.audio/doku.php?id=tb8:authorisation>

PDF Generated: 21.08.2020 | Last update: 2020/06/04 10:41