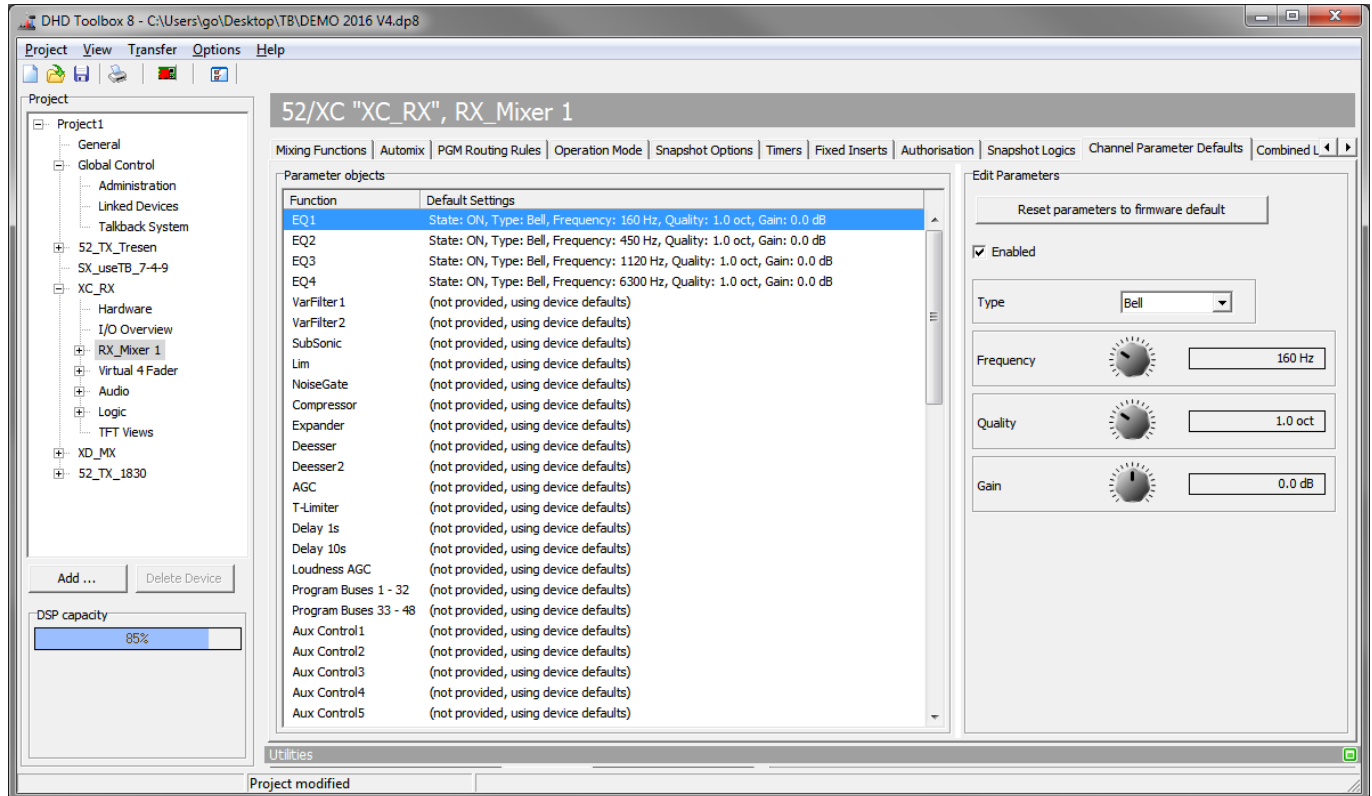


Table of Contents

Channel Parameter Defaults	1
---	----------

Channel Parameter Defaults

You can set default parameters for channels on the **Channel Parameters Defaults** tab.



Channel Parameter Defaults tab

These parameters are loaded, if you

- load channel snapshots (Default parameters are loaded just for those functions which are not saved in the channel snapshot)
- load mixer snapshot (Default parameters are loaded just for those functions which are not saved in the mixer snapshot)
- reset a channel (Default parameters are loaded for all function on this channel)
- save a configuration with new channel snapshot defaults into the device

In the **Parameter objects** area, you can see a list of all available functions to which you can set a default parameter. If no default parameters are set, firmware defaults are set and you can see **(not provided, using device defaults)** in the **Default Settings** column.

Select a function from the **Parameter objects** list to edit its parameters in the **Edit Parameters** area. Depending on the selected function, you can see typical parameters in the **Edit Parameters** area.

Click **Reset to firmware default** to clear the parameters for this function, and set them to firmware default.

Page Title: Channel Parameter Defaults

Permanent link:

https://support.dhd.audio/doku.php?id=tb8:channel_parameter_defaults

PDF Generated: 21.08.2020 | Last update: 2020/06/04 10:41