

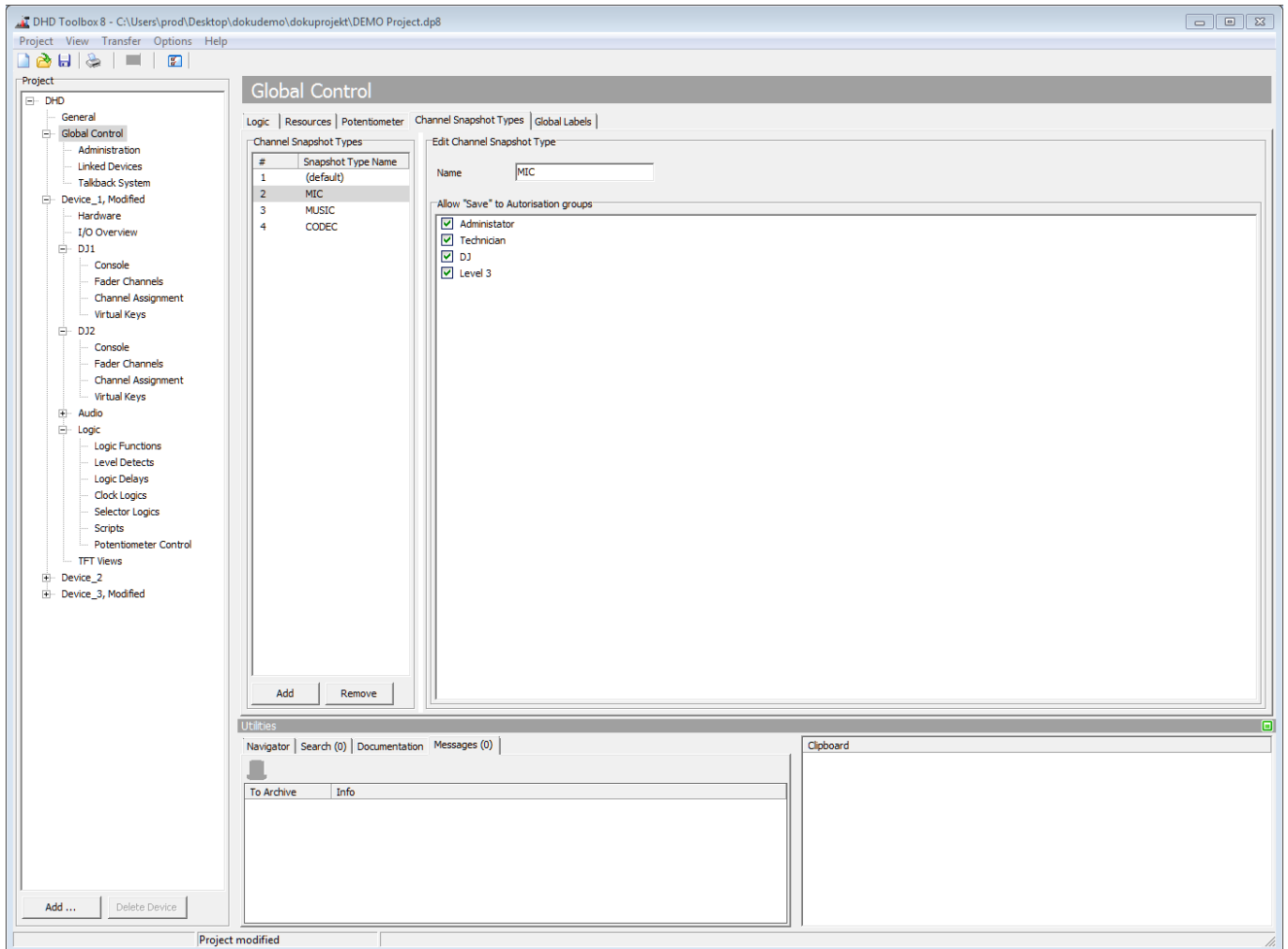
Table of Contents

Channel Snapshot Types - Creating Snapshot Types	1
---------------------------------------------------------------	----------

Channel Snapshot Types - Creating Snapshot Types

In the Project Tree at the **Global Control** node, select the **Channel Snapshot Types** tab. Here you can create several types of channels. Later on, these channel snapshot types are assigned to snapshot channels and to fader channels.

The purpose of this procedure is to separate channel snapshots in different groups. This makes it possible to define which authorisation groups are allowed to save and to overwrite specific snapshots and you will get a smaller list of loadable channel snapshots.



Creating global Channel Snapshot Types.

In the **Channel Snapshot Types** area you can see all channel snapshot types in a list. With the **Add** button below you can create up to 20 channel snapshot types. Click **Remove** to delete the selected entry from the list. A **default** type is automatically created. You are able to change the label and the settings of this default type, but it is not possible to delete this first entry of the list.

In the **Edit Channel Snapshot Type** area you can enter a label for the selected entry in the **Name** box.

In the **Allow "Save" to Authorisation groups** area all defined authorisation groups are shown (see [Authorisation - Authorisation Groups](#)). Select the check boxes in front of these labels to allow the users to save

channel snapshots of fader channels with the respective type.

Page Title: Channel Snapshot Types - Creating Snapshot Types

Permanent link:

https://support.dhd.audio/doku.php?id=tb8:global_snapshot

PDF Generated: 31.07.2020 | Last update: 2020/06/04 10:41