

## Table of Contents

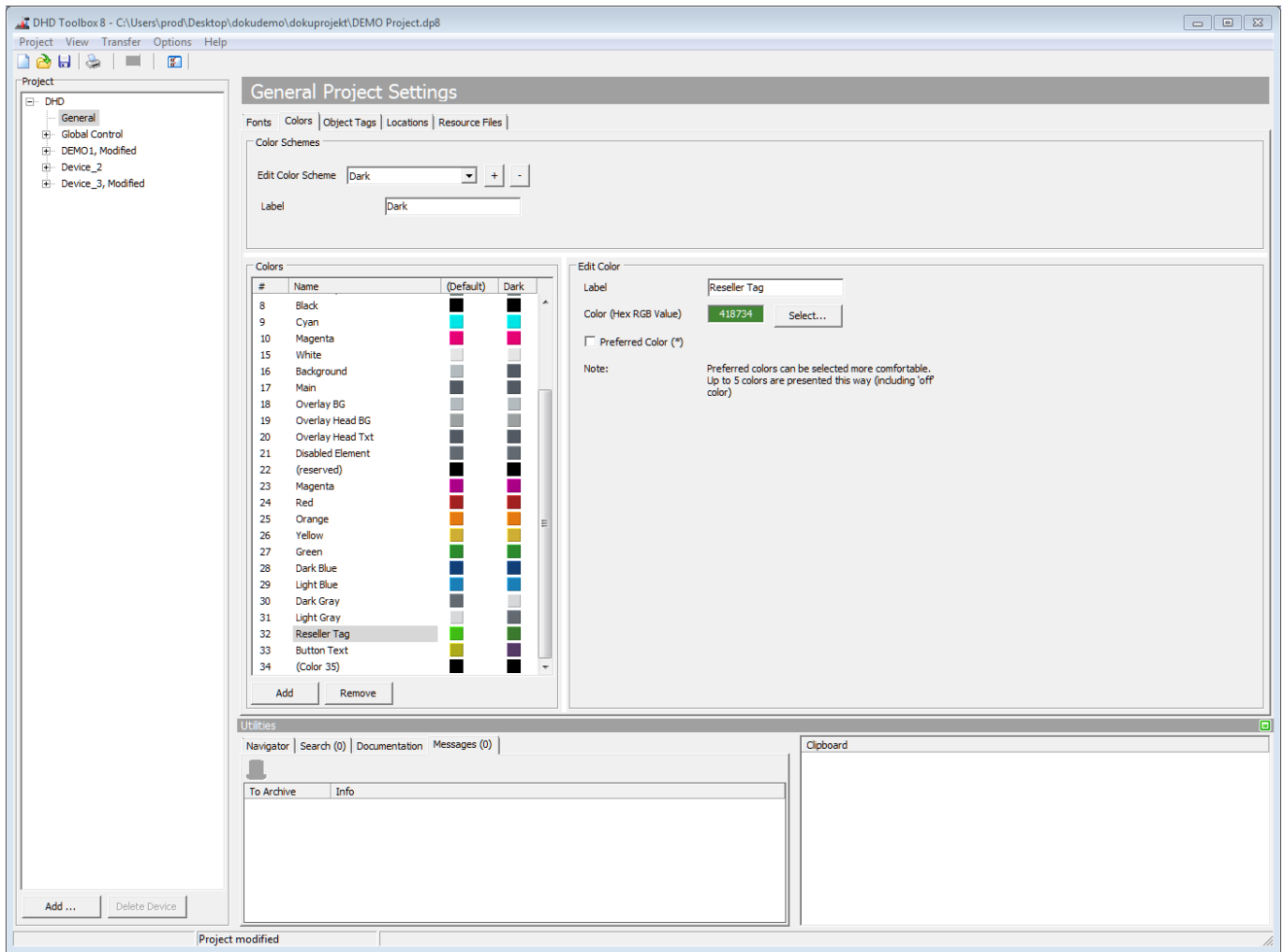
---

<b>Colors</b> .....	<b>1</b>
---------------------	----------

# Colors

On the **Colors** tab, you can manage your color schemes and used colors. Colors and color schemes are useful for **TFT design**.

You can select colors for every TFT element and change them when selecting another scheme or centrally edit one color here.



*Colors Tab. Changing Color settings.*

To add a color, click **Add**. On the bottom of the list, a new color entry named **(Color <X>)** is created. Select it, to set the **Color** settings in the **Edit Color** area.

Enter a distinctive name for the color in the **Label** box. It will later be shown on every selection menu for colors.

Select the color you want. There are two ways to do so:

- **Visual color selection.** Click **Select**. The a color selector will be displayed. Here you can select basic colors, create user defined colors or select in the color graphic on the right. For creation of user defined colors, select the Entry where to save it and the color you want and click **Add Color**. If you made your choice, click **OK**. The color will now be selected in the HEX value field.

- Direct HEX code selection. If you have a predefined color, you can directly add the HEX value. Simply click in the field that has the default value 000000 and enter your HEX color code. Entering # before the HEX code is not necessary and will be ignored. For more information on HEX colors, see [Wikipedia: Web Colors](#).

The first 27 colors of every scheme are predefined. They can not be deleted and Label can not be changed. On (Default) theme, the Color can not be changed.

The first 11 colors are reserved for system functions and have to exist in every scheme and can not be edited.

This restrictions do not affect Preferred Color (\*) setting.

**Preferred Colors**

You can select up to 4 colors as preferred color. When selected, they will be shown on color selection menus directly and on top of the dropdown menu. Also, off is always a preferred color.

Prio.						Lamp Source
1	OFF					On
2	OFF					Off
3	OFF					Off+Ready
4	OFF					On+Ready

Color Selection, Preferred Colors.

**Page Title: Colors**

Permanent link:

<https://support.dhd.audio/doku.php?id=tb8:colors>

PDF Generated: 20.07.2020 | Last update: 2020/06/05 11:15