

Table of Contents

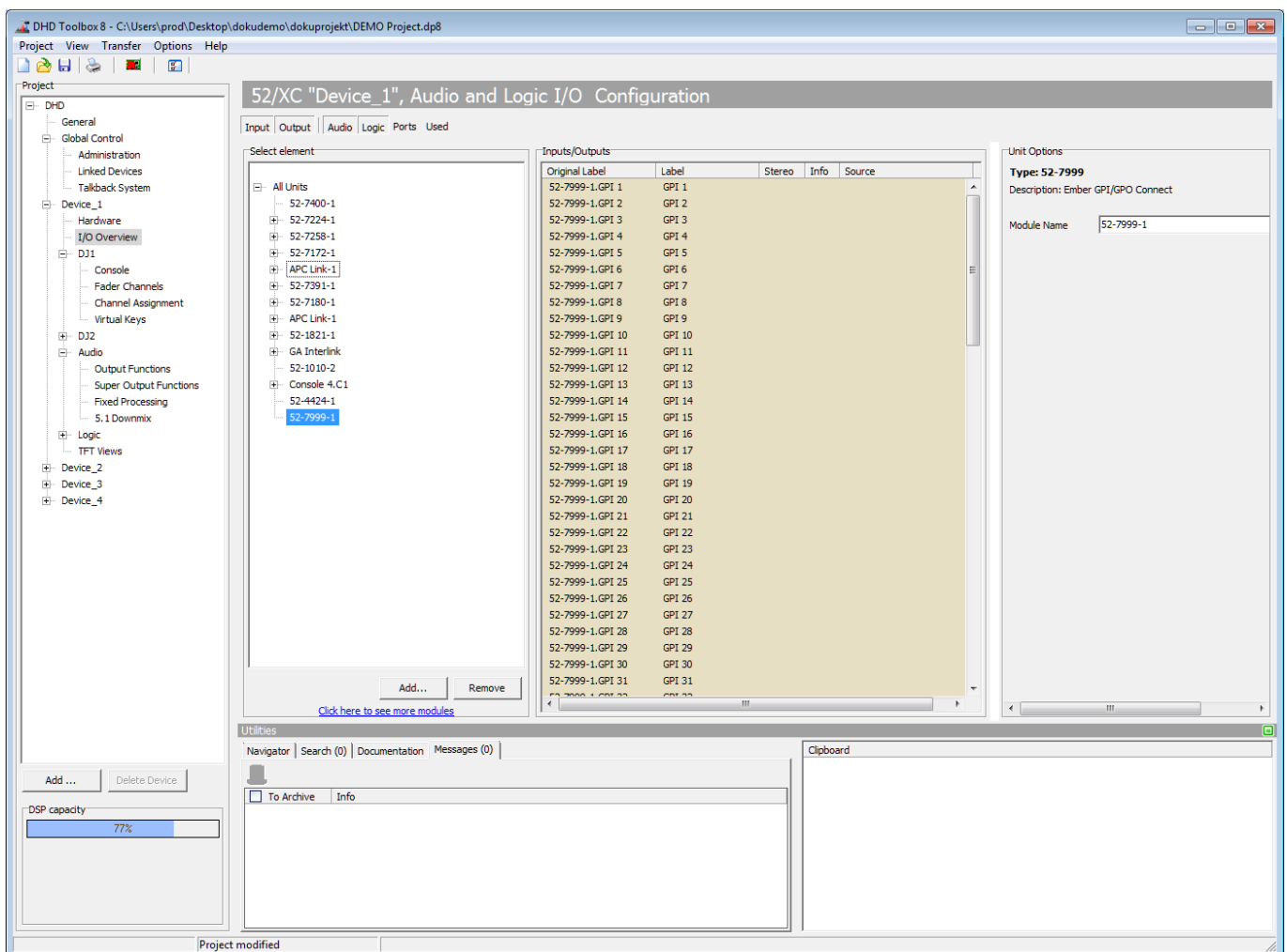
Ember+ Configuration	1
Ember+ Audio Routing in DHD Devices	2

Ember+ Configuration

The Ember+ protocol is available in the DHD Firmware. The implementation was realised as controlled device – the so-called Ember+ provider.

The following functions are currently featured:

- Receiving 50 GPIs per mixing console via Ember+.
- Sending 50 GPOs per mixing console via Ember+.
- receiving and sending global labels, for example to change labels of DHD fader channels or send text messages to a TFT screen.
- Controlling fader levels.
- **Audio Routing.**



Ember+ Device in I/O Device window

To add an Ember+ Device in TB8, go to **<Device>/I/O Overview** page. Click **Add** and select **52-7999 Ember GPI/GPO Connect**.

52-7999 Ember GPI/GPO Connect

Virtual Ember+ I/O Device

You have now 50 GPIs and 50 GPOs and also control data for all assigned fader channels available to work with.

The data transmission is realised via TCP/IP. The DHD system has to be connected by suitable network technology with the controlling system – the Ember+-Consumer – in order to allow this TCP/IP data transmission.



Note

The Ember+ data are received and sent directly by the controller of the DSP Core for each mixing console. An interfacing PC is not necessary.



Note

The Ember+ implementation has been tested with the Ember+ Viewer and with VSM (Virtual Studio Manager).



Note

Ember+ runs on Port 9000 on all DHD devices.

Ember+ Audio Routing in DHD Devices

DHD devices provide the possibility to perform I/O routings within the DSP cores via Ember+. The Routing option is provided as **Routing** node in Ember+. To enable this option, simply add the **52-7999 Ember GPI/GPO Connect** in your **<Device>/I/O Overview** page. The routing matrix visible in the Ember+-tree will include only physical inputs and physical outputs. For routing other signals available on the TDM bus, the Ember+ implementation of the DHDOS/DHDOM needs to be used. There you can create individual routing matrices with much more I/O options.



Important

The I/O routing via Ember+ is available only for 52/XC2, 52/XS2, 52/XD2 cores (52-7420, 52-7423, 52-7410, 52-1810, 52-1830, 52-7456)

Ember+ Provider for DHDOS 52-8573

Ember+ functionality is also provided in DHDOS/DHDOM, for example to set crosspoints in routing matrices created with the DHD Routing Software. See [DHDOS Documentation](#) and [DHDOM Documentation](#) for more information.

Page Title: Ember+ Configuration

Permanent link:

<https://support.dhd.audio/doku.php?id=tb8:emberplus&rev=1552408897>

PDF Generated: 21.08.2020 | Last update: 2019/03/12 17:41