

Table of Contents

Global Label	1
---------------------------	----------

Global Label

Global Labels are text strings that can be used in the whole project. All devices that use a certain global label show the same text.

Global Labels can be used in:

- channel labels
- selector lists
- TFT elements
 - Transparents
 - user defined buttons
- Ember+

To insert a Global Label in a Label box use braces with the Global Label number, for example `{1}` for Global Label number 1 in complete length.

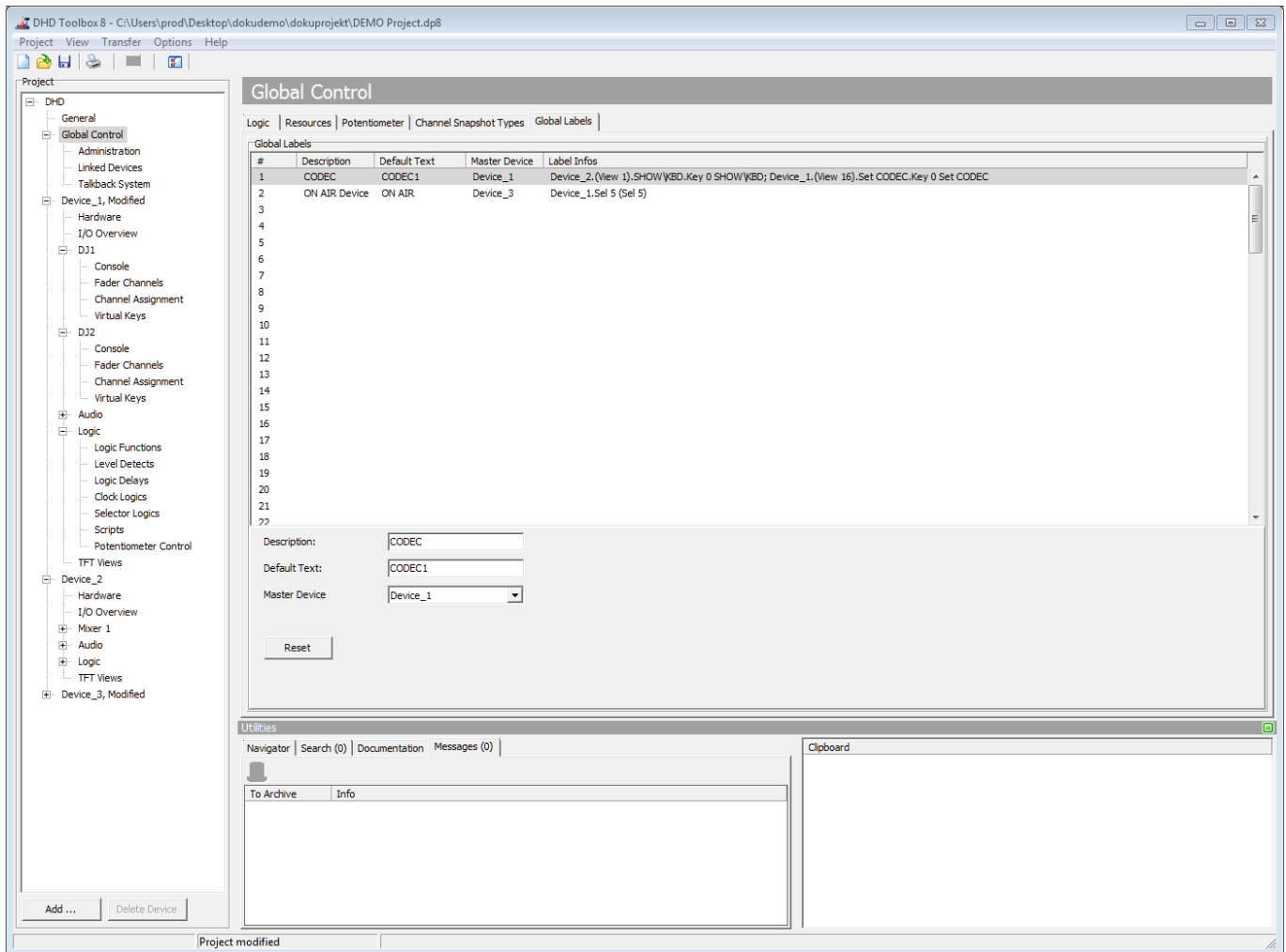
Global Labels can be limited to a certain number of characters. Just add the number of characters, separated by a colon `:` to the Global Label number - for example `{1:16}` will show only the first 16 characters of Global Label number 1.

Global Labels can be set by:

- TFT Keyboard (Show keyboard options)
- Selector (Assign to Global Label option, see [Selectors](#))
- Ember+
- Routing Software

Each Global Label is defined with `Default Text`, `Description` and a `Master Device`.

The `Label Infos` column shows you, which device and which elements set / modify the Global Label.



Global Labels, Editing Global label options

Page Title: Global Label

Permanent link:

https://support.dhd.audio/doku.php?id=tb8:global_labels

PDF Generated: 31.07.2020 | Last update: 2020/06/04 10:41