

Table of Contents

Hardware	1
-----------------------	----------

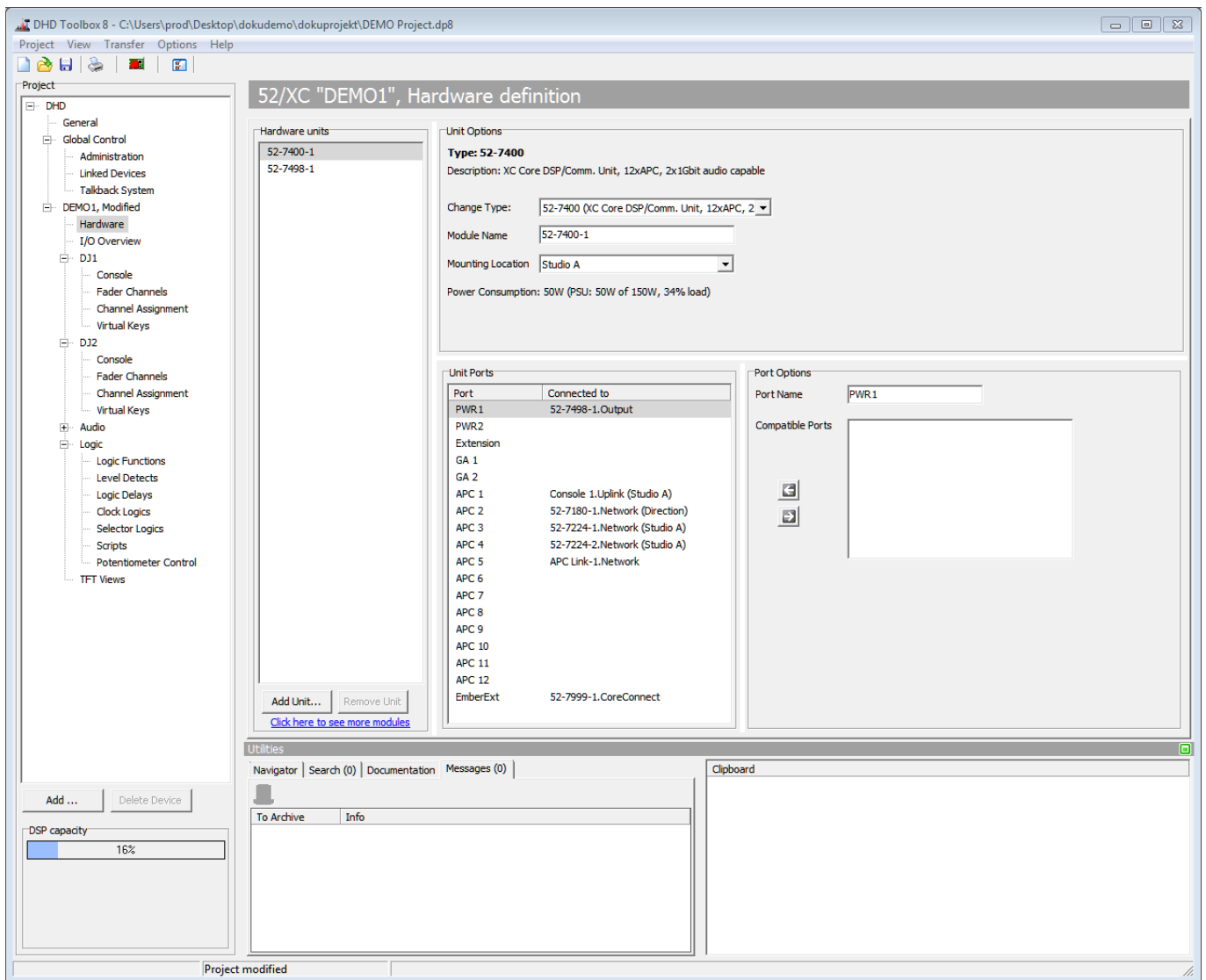
Hardware

At the beginning of each configuration, you have to set up the available hardware and I/O modules. You define which modules are used in your system and which I/O modules are connected on which port of the DSP Core.

To start the configuration, select the desired device in the project tree and then select **Hardware**. In the **Hardware units** area you find the basic hardware parts, which are required for a system, like DSP unit, power supplies or Concentrators. Click **Add Unit** to add all modules that are available in your system. To delete a selected module from the system, click **Remove Unit**.

If you add a new device in your Project tree, first always go to **<Device>/Hardware** and select the type of your device in the **Unit Options** area. To select device type, select the default entry and change the core type to the one you want to configure.

If you do not see your product, click **Click here to see more modules** or the menu **Options/Configuration.../Product filter**. Here you can set the product filters.



Hardware Definition

To use your own module name instead of the module number, in the **Unit Options** area, you can enter a distinctive name in the **Module Name** box. You can also enter the location of the module in the **Mounting Location** box. (see also [global mounting location settings](#))

In the **Unit Ports** area, each port of a selected module is shown. You can also find in this list the modules, that are connected to the ports.

In the **Port Options** area you can change the name of each port. You can also change the connected module by selecting another module in the **Connected to** list.

**Important**

You must always connect sufficient power supply virtually. If it is not created and connected, **DSP capacity** will jump to 100% and tell you, that your module is not connected to sufficient power source.

**Note**

Connect all consoles, TFT Touch displays, I/O modules and Device Links manually to one of the APC ports in your system to get a correct hardware fitting.

Page Title: Hardware

Permanent link:

<https://support.dhd.audio/doku.php?id=tb8:hardware>

PDF Generated: 21.08.2020 | Last update: 2020/06/04 10:41