

Table of Contents

Import Toolbox5 projects in Toolbox 8	1
<i>Requirements for existing Toolbox5 project file</i>	2
<i>Requirements for Toolbox8</i>	2
<i>Import Procedure</i>	2

Import Toolbox5 projects in Toolbox 8

Toolbox 5 projects can be imported to Toolbox 8.1. Hardware restrictions and configuration adaptations for old projects might be possible.



Important

If your system is running well and no new features are required, an upgrade to Toolbox8 is not required. Only upgrade to Toolbox 8 if you carefully checked existing hardware for compatibility.



Warning

With Firmware version 8.x or higher, the hardware modules of the series RM4200D (DSP Frame and control modules), 52/XR (MADI Router), 52/MB (Stagebox) are not supported. Therefore these device are not supported in the TB8 anymore.

Mixed TB5 projects including these devices and current DSP cores can be imported. While the DSP cores (52/XC, 52/XD, 52/XS) will be imported, the RM4200D, 52/XR and 52/MB will be included only as a placeholder for their **Device Number** (see [Device - Options](#)). All of their logics, signals, and console configurations will be removed from the project and other devices. Only "[Global logics](#)" will remain.



Warning

With firmware version 8.x or higher TFT Touch Displays with type RM420-015 and 52-4015A are not supported any more. They will not operate when they are connected to a core with firmware version 8.x or higher.

The TFT Displays 52-4015B, 52-4015C, 52-4017A, 52-4017B, 52-4018A are not affected. Their firmware will be automatically updated when connecting to a core with firmware 8.x.



Note

TFT displays with capacitive touch (glossy displays - 52-4018A, 52-4010A, 52-1156 (52/TX), 52-4510A) will use a new graphics design (like it is shown in the Toolbox TFT design). They will additionally support touch faders & touch encoders.

TFT displays with resistive touch (matte displays - 52-4015B, 52-4015C, 52-4017A, 52-4017B) will show the graphics design used in firmware versions 6.x or 7.x (dark blue background, etc.).



Important

For information about the update procedure of the firmware see [Update from Firmware 7 to Firmware 8](#)

Requirements for existing Toolbox5 project file

The project file should be saved with Toolbox5 (version 7.4.10 at least).

Requirements for Toolbox8

To import an existing project file from Toolbox5 into Toolbox8, use Toolbox8 version 8.1.8 at least.



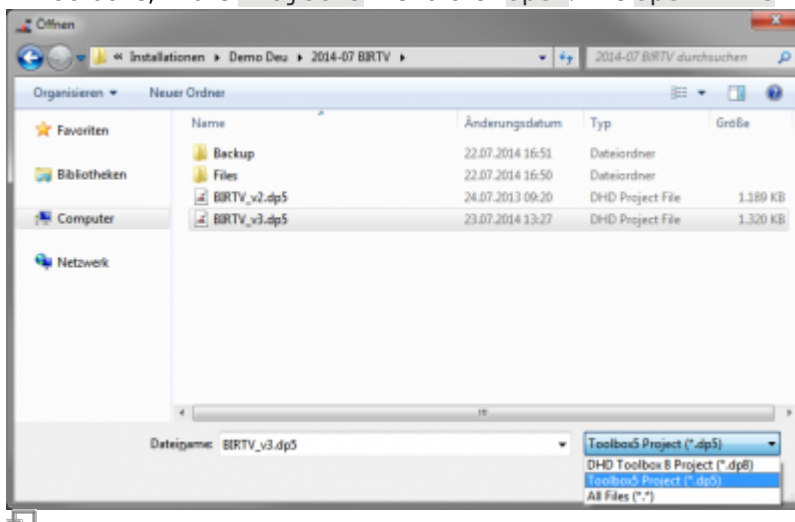
Warning

Do not use Toolbox8 versions 8.1.17 or 8.1.18.

Import Procedure

To import the project file follow these steps:

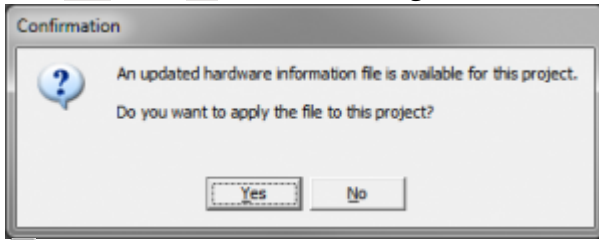
1. In Toolbox8, in the **Projects** menu click **Open**. The **Open File** window is shown.



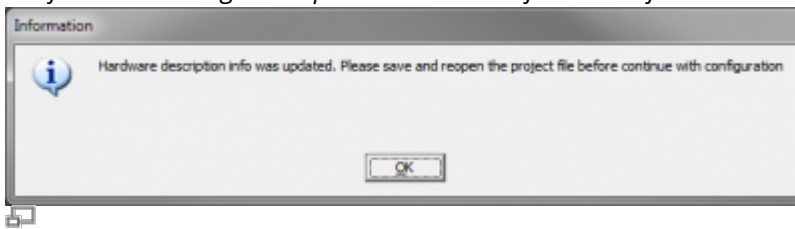
Open file window with Toolbox5 file type selection.

2. In the lower right corner of this window, select **Toolbox5 project (*.dp5)**.

3. Select the *.dp5 file to import and click **Open**. A progress bar window will be shown and the file will be imported and checked for consistency.
4. If a **Confirmation** dialogue is shown (only up to TB8 ver. 8.1.14) for updating the hardware information, click **Yes**. Click **OK** for the following information window. A Toolbox restart might be required.

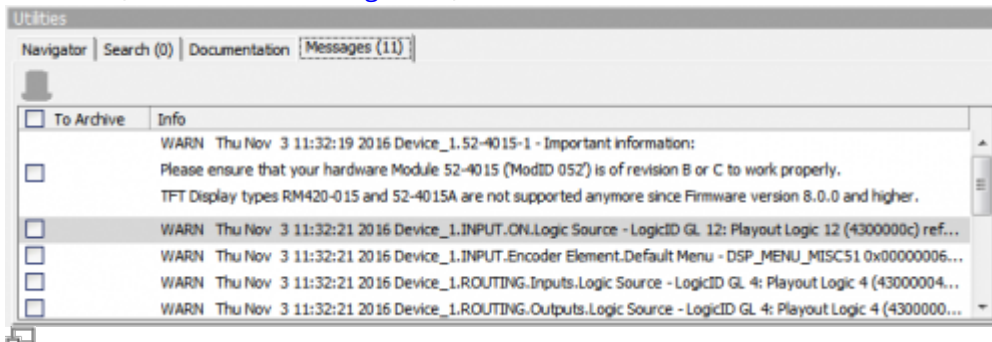


Confirmation dialogue to update hardware information file



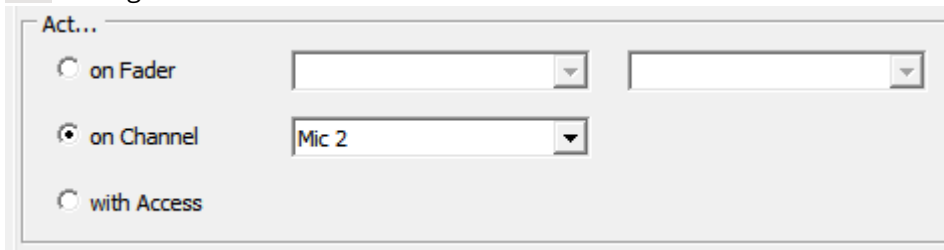
Information window about successful update of hardware information file.

5. After successful importing the configuration file, in the **Project** menu, click **Save as...** to save the project file as *.dp8.
6. Check the **Message** tab in the **Utilities** area. Go through each point and check if the configuration for each element needs to be adopted. You can double-click the most of the lines to jump directly to the element. (see [Utilities - Messages tab](#))



Messages tab: Note the remarks after importing the project file

7. Check all elements on the TFT views for correct position and parameters, especially signal sources and **Act** settings.



TFT views - Element Configuration - Act settings

8. Replace all **Button List** elements with the "**Button List 2015**" element.
9. Replace all **Timer** elements with "**Label Element**" with timer function and buttons for control instead.



Important



Check the font size on a physical TFT display, when using the display types (52-4015B, 52-4015C, 52-4017A, 52-4017B). The preview in TB8 is not WYSIWYG for these types. They will still show the graphics design used in firmware versions 6.x or 7.x (dark blue background, etc.).

We recommend to use only the first 10 colors of the colors list (see [Colors](#)). These provide the best viewing experience for this display types.

Page Title: Import Toolbox5 projects in Toolbox 8

Permanent link:

https://support.dhd.audio/doku.php?id=tb8:import_tb5_in_tb8

PDF Generated: 14.07.2020 | Last update: 2017/03/14 14:47