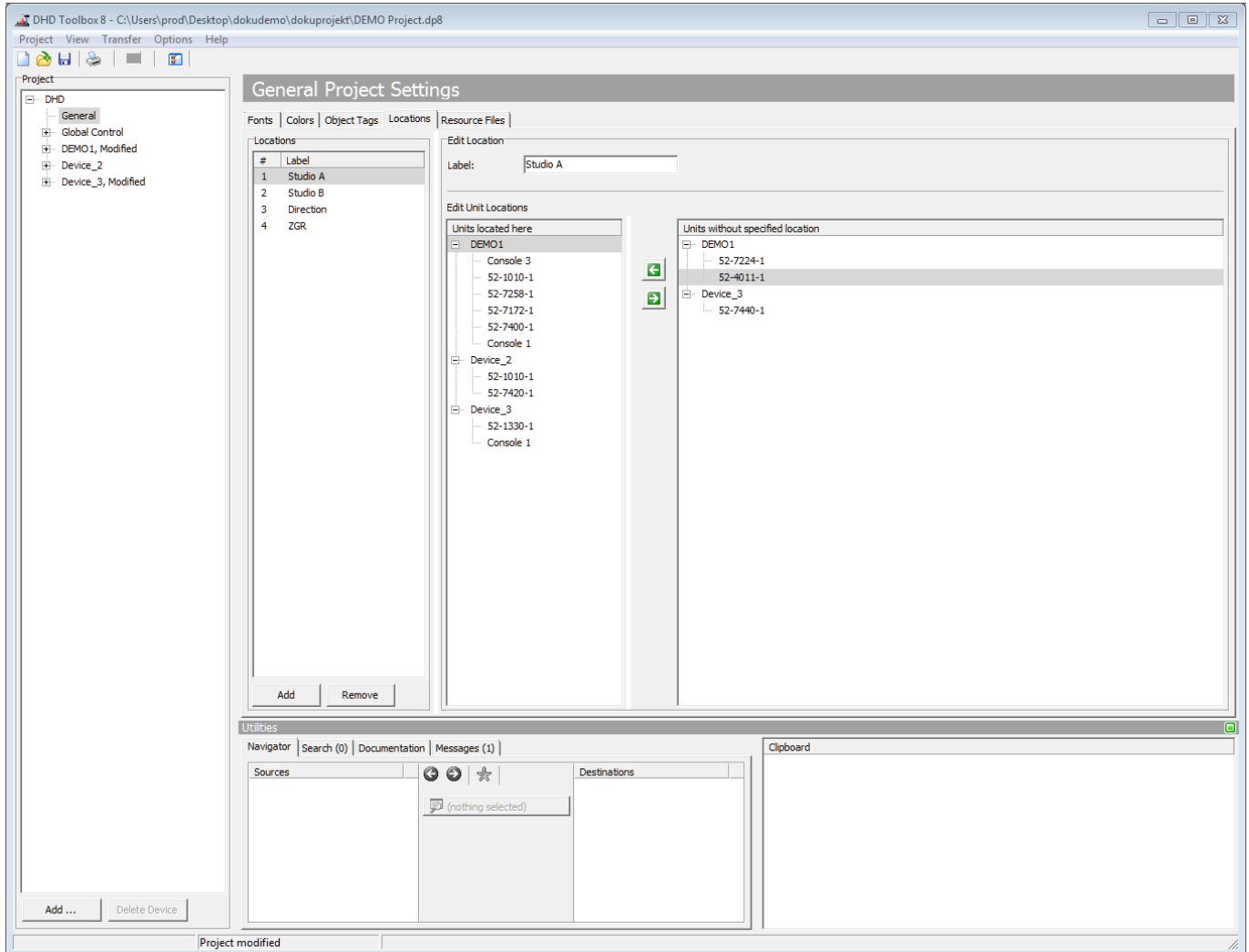


Table of Contents

Locations	1
------------------------	----------

Locations



You can use the **Location** tab for getting a better overview about the project's locations and the assigned hardware parts.



Locations tab. Creating and assigning Locations

This makes it easier to reconstruct locations of devices in complex configurations. In this window you can assign devices to locations.

Click **Add** to create a new location. In the **Label** box, enter a distinctive name. To remove a location select it and click **Remove**.

To edit location assignments, select the location you want to edit. In the **Edit Location** area, select the unspecified unit on the right and assign it to the location with the  button. To remove a device from a location, select it in the **Units located here** list and deassign it with the  button.

Alternatively, in **Hardware**, **Console** or **I/O Overview** settings you can use the **Mounting Location** drop-down menus to assign devices directly to a location.



Tip

If you print pages with modules or parts, location assignments are also listed.

Page Title: Locations

Permanent link:

<https://support.dhd.audio/doku.php?id=tb8:locations>

PDF Generated: 20.07.2020 | Last update: 2020/06/04 14:32