

Table of Contents

Selector Source Lists	1
------------------------------------	----------

Selector Source Lists

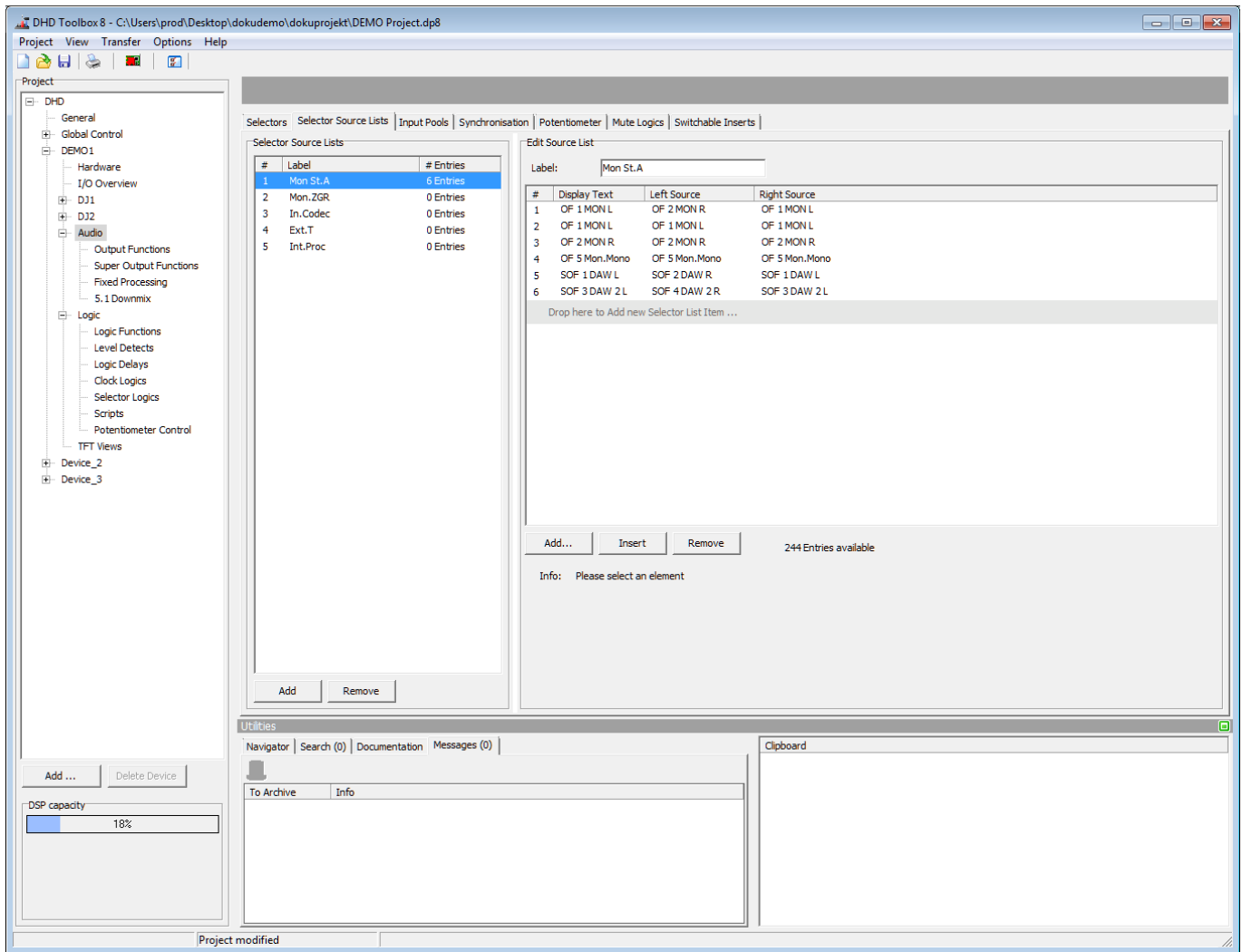
On this tab, you can configure signal lists (Selector Source Lists) that are required for configuring selector functions.

Up to 20 different signal lists with a total of 500 entries are available. For example up to 20 lists with 25 entries each or a list of 500 entries can be configured.

To configure a signal list, follow these steps:

1. In the **Selector Source Lists** area, select a source list from the list.
2. If necessary, assign a distinctive name to it by entering the name in the **Label** box.
3. In the **Edit Source List** area, click **Add** to add an audio sources entry to the list. Each row represents a stereo signal. **Insert** adds an audio sources entry on the current selected position. Alternatively, you can drag & drop entries to sort them.
4. In the **Display Text** box, enter a name for the list entry.
5. To assign an audio source for the left channel to the list entry, click **Select** besides the **Source Left** box. The **Audio Sources** window opens. Every signal available on the TDM bus can be used as source.
6. In the **Audio sources** window, select an audio source and click **Assign**. Alternatively, you can double-click on the audio source or drag it from the **Audio Sources** window to the **Source left** box.
7. To assign an audio source for the right channel to the list entry, click **Select** besides the **Source Right** box. The **Audio Sources** window opens. Every signal available on the TDM bus can be used as source.
8. In the **Audio sources** window, select an audio source and click **Assign**. Alternatively, you can double-click on the audio source or drag it from the **Audio Sources** window to the **Source right** box.

To delete a source, select the desired source in the list and click **Remove**.



Selector Source Lists, Configuring signal lists.

The last selector positions are kept after rebooting the device.

After a firmware reset, they are set to the list entry saved in Default Snapshot. If nothing is defined the entry is reset to the default source of the selector.

Page Title: Selector Source Lists

Permanent link:

https://support.dhd.audio/doku.php?id=tb8:selector_source_lists

PDF Generated: 21.08.2020 | Last update: 2020/06/04 10:41