

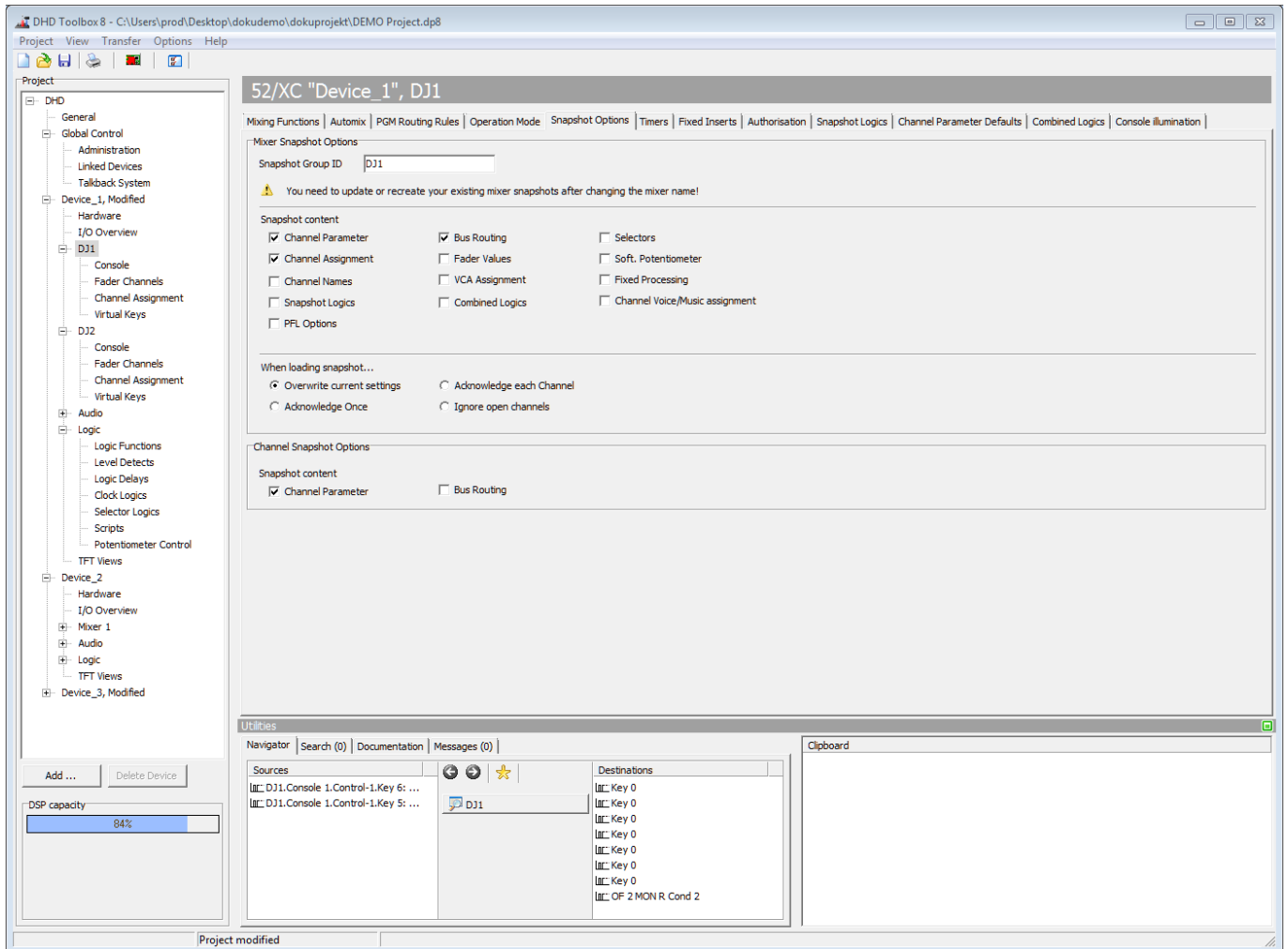
Table of Contents

Snapshot Options	1
<i>Mixer Snapshot Options</i>	1
Snapshot Group ID	1
Snapshot content	2
When loading snapshot...	3
<i>Channel Snapshot Options</i>	3
Snapshot content	3

Snapshot Options

You can save the settings of Input Gain, Input Processing, Input Routing, Summation, Aux and Clean Feed of all fader channels of the mixer as a mixer snapshot and load them again later on. The same is possible for the separate channels, thus saving/loading all Input Gain and Input Processing settings for a channel selected via ACCESS (see also [Snapshot Functions](#)).

In the project tree, select `<Device>/<Mixer>`. Select the `Snapshot Options` tab. Here you can select which functions and contents are saved in a snapshot.



Snapshot Options Page.

Mixer Snapshot Options

Snapshot Group ID

Note

The Snapshot transfer always requires DHDOSOM with snapshot manager software &



license. See [Operation Manager Documentation](#) for further details



Note

Only necessary for Mixer Snapshots.

Virtual Mixers that should interchange mixer snapshots should have the same Snapshot Group ID.

If you want to transfer mixer snapshots from your server PC to a DHD device, it is essential that the Snapshot Group IDs are identical. Please read the section [Mixer Snapshots](#) to find out how to change the Snapshot Group ID of snapshots stored on the server PC.

In the **Snapshot Group ID** text box you can find the current ID of the virtual mixer. It is possible to change this ID, but then it is necessary to transfer the changed device configuration to the hardware afterwards.



Tip

You can use the same Snapshot Group ID on virtual mixers with the same Hardware Setup, e.g. use the ID **Studio** for Mixers **Studio 1** and **Studio 2**. This makes it possible to transfer mixer snapshots between them.



Important

You need to update or recreate your existing mixer snapshots after changing Snapshot Group ID.



Note

By default, Mixer Name and Snapshot Group ID are coupled. When Changing Snapshot Group ID, the two values are uncoupled.

Snapshot content

option	description
Channel Parameter	Save the parameters of all channels in the mixer snapshots.
Channel Assignment	Save the assignments of the defined fader channels to the physical faders in mixer snapshots.
Channel Names	If you have changed the channel names with the Snapshot Manager Software of DHD Operation Manager and you want to load these new names, you have to activate this function. Otherwise, the default names, which are defined in the TB8 will be loaded.

option	description
Snapshot Logics	Save the status of the snapshot logics in mixer snapshots.
PFL Options	Include the PFL selections for all channels that is selected when saving when saving a Mixer Snapshot.
Bus Routing	Save the settings of the Bus Routings for all channels in mixer snapshots.
Fader Values	Save the fader positions of all channels in mixer snapshots.
VCA Assignment	Save the VCA assignment of all channels in mixer snapshots.
Combined Logics	Save the assignment of a channel to a combined logic in mixer snapshots. Saves not the status of a combined logic.
Selectors	Save the source selections in mixer snapshots. Note: You have to enable each selector that should be affected by this saving option. (See Monitor Functions)
Software Potentiometer	Save the software potentiometer values in mixer snapshots. Note: You have to enable each software potentiometer that should be affected by this saving option. (See Potentiometers - Assigning Potentiometers)
Fixed Processing	Include the settings of the fixed processing when saving a mixer snapshot.
Channel Voice/Music assignment	Save the assignment of channels to voice bus or music bus in mixer snapshots.

When loading snapshot...

option	description
Overwrite current settings	<ul style="list-style-type: none"> Overwrites all settings of all channels immediately after loading a mixer snapshot.
Acknowledge each Channel	<ul style="list-style-type: none"> Overwrites all settings of all channels with closed faders immediately after loading a mixer snapshot. The ACCESS keys of all channels with opened faders start flashing. Press the ACCESS key to confirm the loading process for each single channel.
Acknowledge Once	<ul style="list-style-type: none"> Overwrites all settings of all channels with closed faders immediately after loading a mixer snapshot. The ACCESS keys of all channels with opened faders start flashing. Press one of these ACCESS keys to confirm and all settings of all channels with opened faders will get overwritten.
Ignore open channels	<ul style="list-style-type: none"> Overwrites all settings of all channels with closed faders immediately after loading a mixer snapshot.

Channel Snapshot Options

Snapshot content

option	description
Channel Parameter	Include the parameters of a channel when saving a channel snapshot.
Bus Routing	Include the settings of the bus routing for a channel when saving a channel snapshot.

Page Title: Snapshot Options

Permanent link:

https://support.dhd.audio/doku.php?id=tb8:snapshot_options

PDF Generated: 21.08.2020 | Last update: 2020/06/08 11:11