

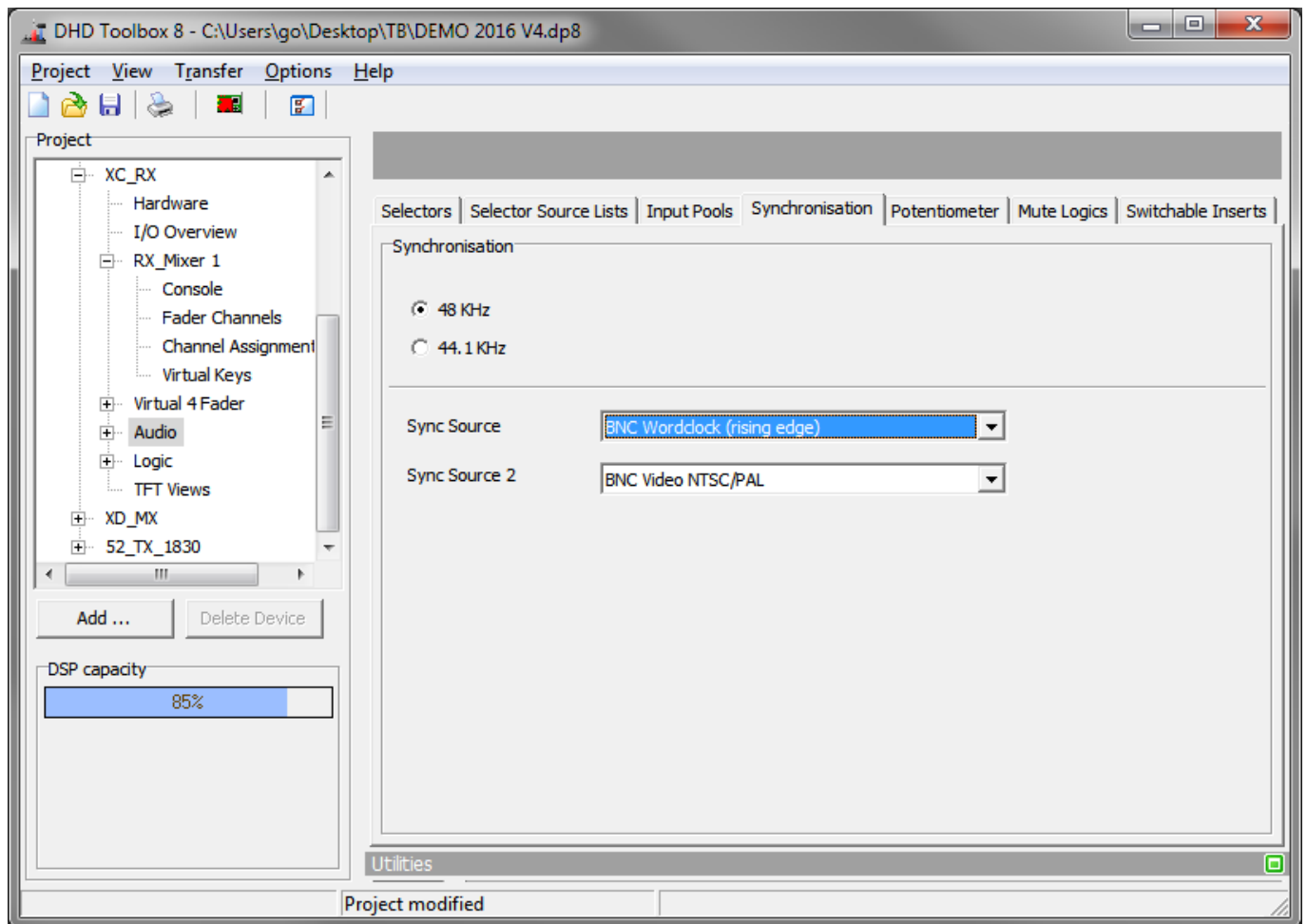
## Table of Contents

---

<b>Synchronisation</b> .....	1
<i><b>System Sample Rate</b></i> .....	1
<i><b>Synchronisation Sources</b></i> .....	2
Available sync signal options .....	2

# Synchronisation

On the **Synchronisation** tab, you can configure different synchronisation options for the device.



Audio - Synchronisation tab

## System Sample Rate

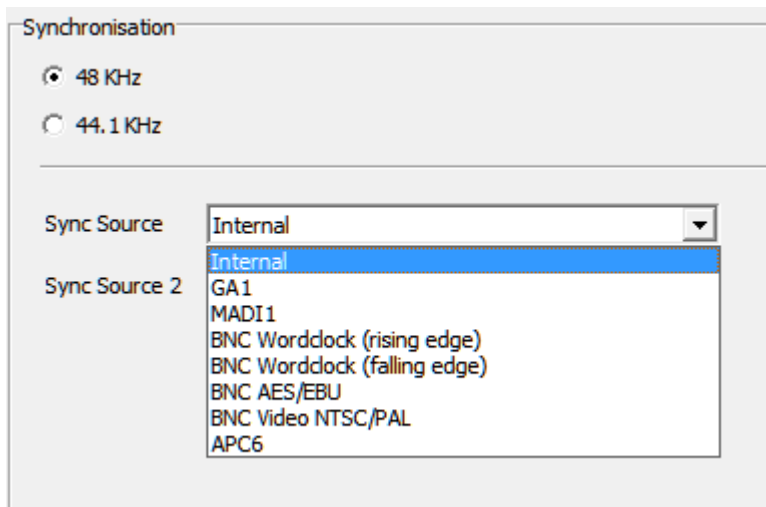
You can adjust the sample rate of a device to 48 kHz or 44.1 kHz.



### Important

Even if the device works with external synchronisation, you have to set the correct sample frequency here, because the internal Quartz PLL can not adjust correctly to the external clock otherwise.

## Synchronisation Sources



Selection of synchronisation sources

You can define two synchronisation sources on 52/XD2, 52/XD, 52/XC2 and 52/XC cores - **Sync Source** and **Sync Source 2**. On 52/XS and 52/XS2 cores you can configure only one sync source.

The source configured at **Sync Source** is the primary synchronisation source. If this sync source fails, the system automatically changes to the source configured in the **Sync Source 2** list. If the second sync source fails too, the system switches to the internal clock of 48 kHz or 44.1 kHz, depending on the selection above.

Sync sources can only be signals that are connected directly to the core. Cores with integrated MADI interface (52-7321, 52-7325, 52-1821 or 52-1825) can sync to that source. Otherwise an external BNC sync needs to be connected. The type of BNC source signal has to be selected on selecting source.

Also direct APC links or Gigabit Audio (GA) links between DSP Cores can be used as a sync source.

### Available sync signal options

sync signal type	52/XD2 cores	52/XD cores	52XC2 cores	52/XC cores	52/XS2 cores	52/XS cores
Internal clock	Yes	Yes	Yes	Yes	Yes	Yes
BNC: Wordclock	Yes	Yes	Yes	Yes	Yes	Yes
BNC: AES11	Yes	Yes	Yes	Yes	Yes	Yes
BNC: PAL / NTSC	Yes	Yes	Yes	Yes	No	No
BNC: HD Tri-Level	Yes	Yes	Yes	No	No	No
MADI <sup>1)</sup>	Yes	Yes	Yes	Yes	Yes	Yes
GA <sup>2)</sup>	Yes	Yes	Yes	Yes	Yes	Yes
APC <sup>3)</sup>	Yes	Yes	Yes	Yes	Yes	Yes
Dante <sup>4)</sup>	No	No	Yes	No	Yes	No

<sup>1)</sup>

optional MADI module (52-7321, 52-7325, 52-1821 or 52-1825) required

<sup>2)</sup>

optional XC Gigabit Audio port (52-7391 or 52-7395) required

<sup>3)</sup>

additional license required: 52-8582 - XC/XS Core Audio Network

4)

integrated Dante module 52-7080 or 4ch/4ch interface required

**Page Title: Synchronisation**

Permanent link:

<https://support.dhd.audio/doku.php?id=tb8:synchronisation>

PDF Generated: 21.08.2020 | Last update: 2020/06/04 10:41