

Table of Contents

Timers	1
<i>Timer Modes Toolbox8 v8.1.18</i>	2
DHD Timer	2
Continuous Timer	2

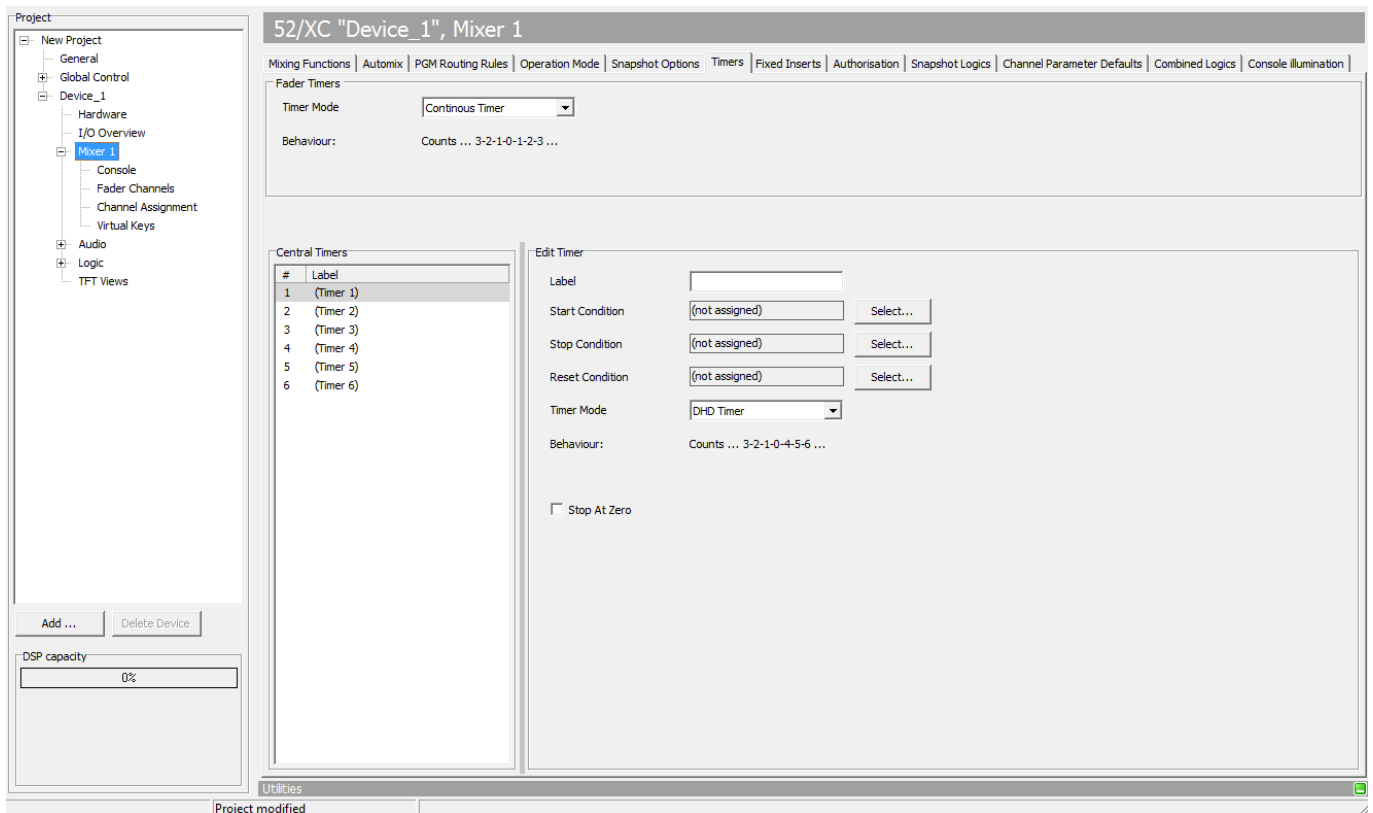
Timers

Select the **Timers** tab to set the options for the available timers in the system.

You can use timers to show or set periods of times in which faders are open, to control other functions.

In the **Timers** area, all available timers are listed. You can neither add nor remove existing timers. Also, you can not change the sequence of the timers in the list. You can use a maximum of six timers per mixer.

The timers in the list have a fixed serial number **Nr** and a **Label**. You can not change the numbers. Select a timer from the **Timers** list. In the **Edit Timer** area, enter a name for this timer in the **Label** box. This name may be up to 16 digits long.



Timers, establishing links between the timers logic functions and the logic sources.

For each timer, you can select a logic source for Start, Stop and Reset. For this, you can use any logic source, for example, the keys of a control module.

Also, you can control and display a timer via TFT Buttons and Labels. See [View Elements & Configuration](#) for more information

Select a timer from the **Timers** list. In the **Edit Timer** area, select a logic from the list. Click **Select** next to the **Source** box. The **Logic Sources** window opens. Select a logic source and click **Assign**. Alternatively, you can also double-click on the Logic source or use drag & drop.

Stop at Zero option will only count down, if a offset is set. Timer will then stop at zero.

Timer Modes | Toolbox8 v8.1.18



Note

This feature is available with Toolbox8 v8.1.18 and Firmware v8.1.22 and higher. Versions below only support DHD timer.

You can choose between two different Timer modes. Timer mode selection is available for each timer (Timers 1-6) and global for all **Fader Timers**.

DHD Timer

Default option.

DHD Timer behaviour is the following:

- Set an offset, e.g. 3 seconds.
- Start the timer
- Timer will count: 3, 2, 1, 0, 4, 5, 6, 7..

The offset is included in the positive timing, so you have a total time of the timer running.

Continuous Timer

Continuous Timer behaviour is the following:

- Set an offset, e.g. 3 seconds.
- Start the timer
- Timer will count: 3, 2, 1, 0, 1, 2, 3, 4..

The offset is not included in the total time.

Page Title: Timers

Permanent link:

<https://support.dhd.audio/doku.php?id=tb8:timers>

PDF Generated: 21.08.2020 | Last update: 2020/06/08 11:26